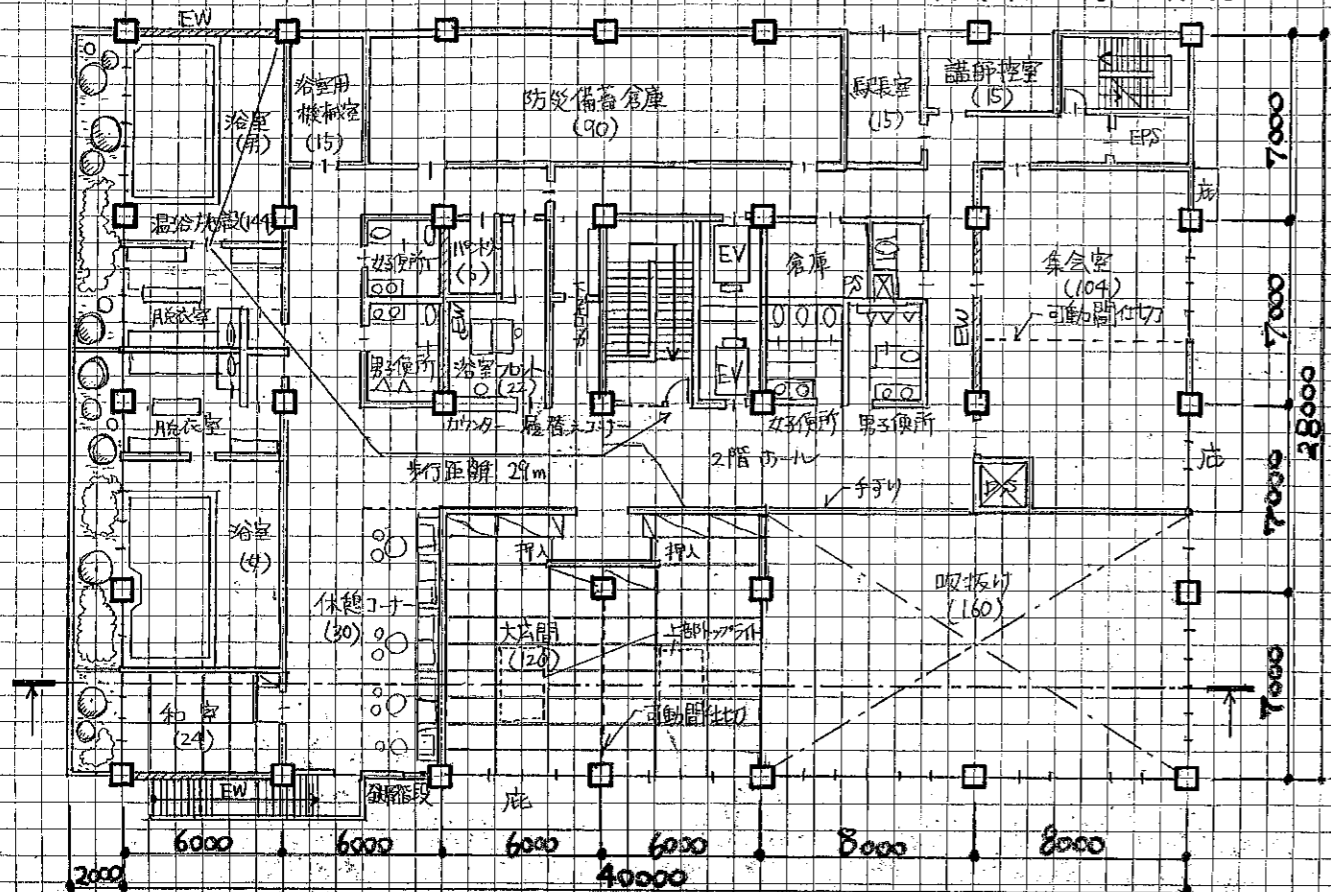
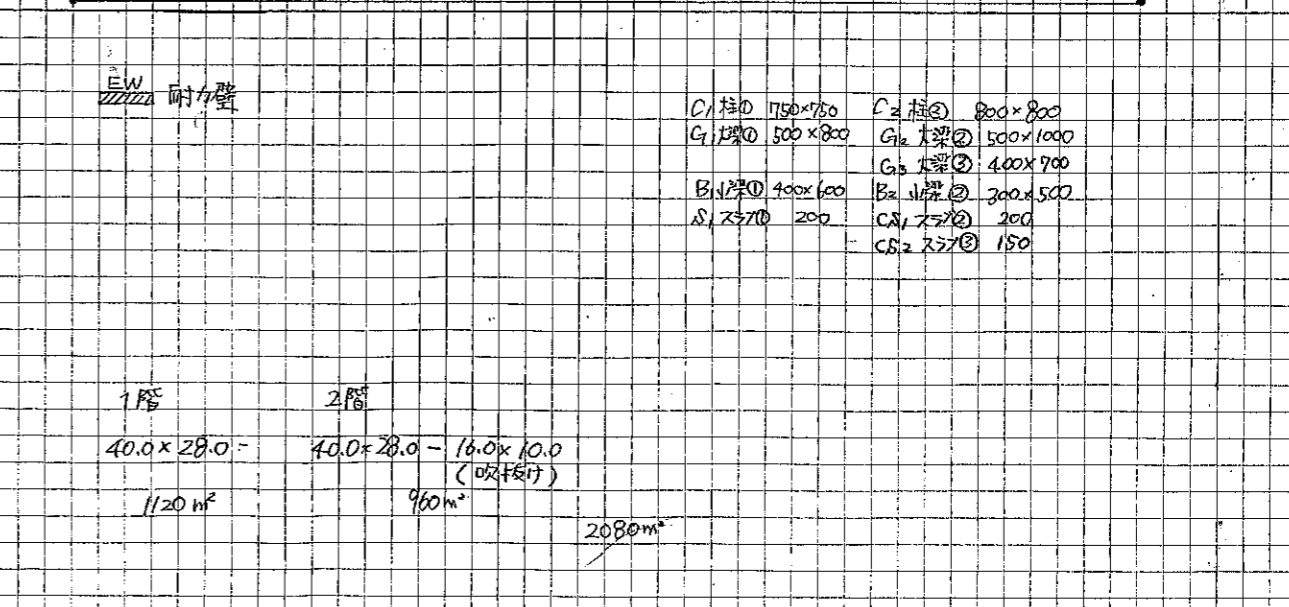
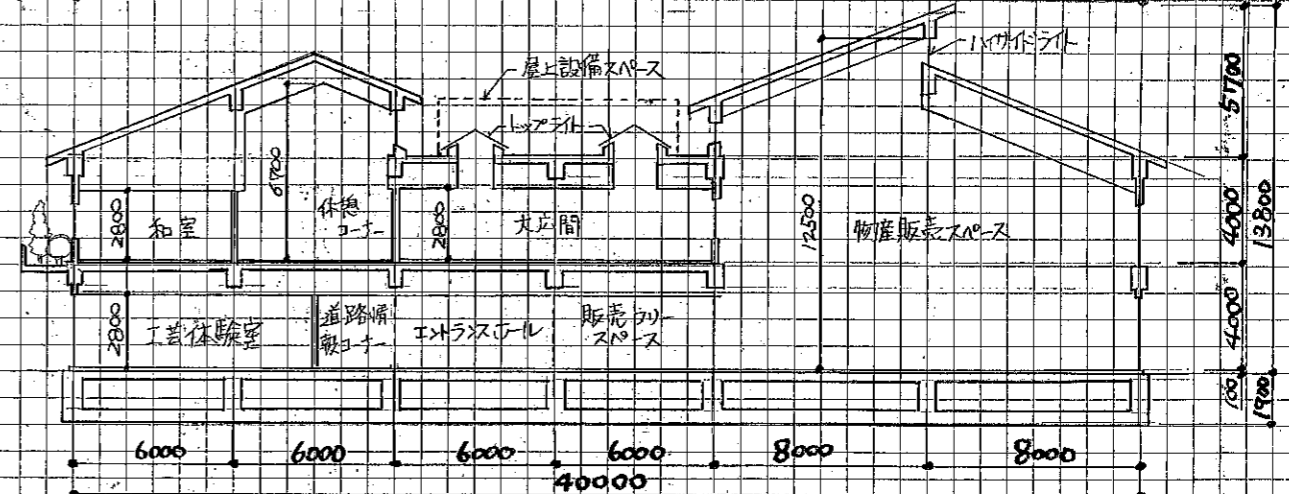
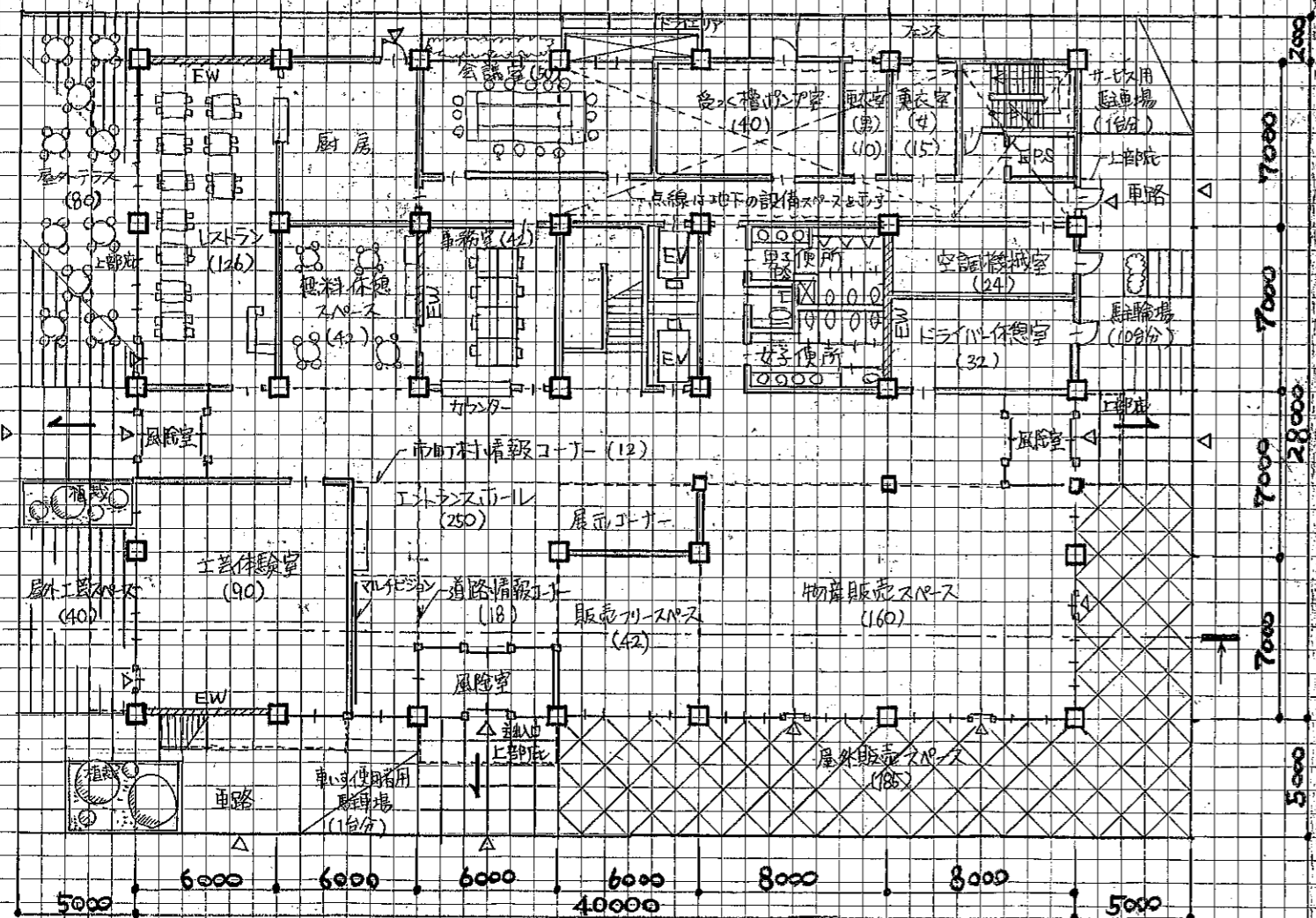
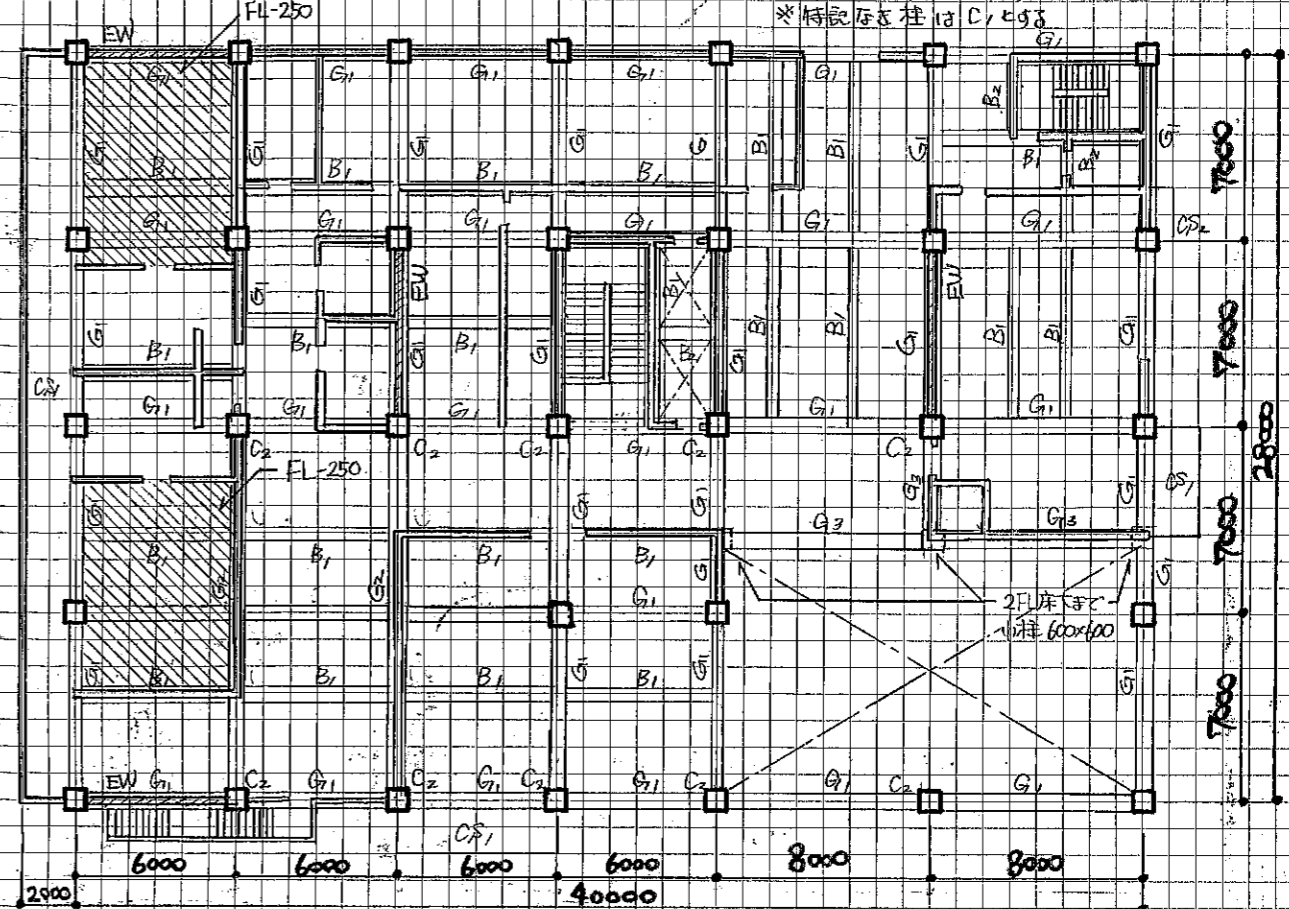


※内装材は全て不燃材とする



※特記屋梁はすべて18寸とする  
※特記柱はC1, C2とする



- C1 柱① 1750x750
- C2 柱② 800x800
- G1 梁① 500x800
- G2 梁② 500x1000
- G3 梁③ 400x900
- B1 梁④ 400x600
- B2 梁⑤ 300x500
- S1 2370 200
- C&S1 2370 200
- C&S2 2370 150

1階 40.0x28.0 = 1120㎡  
2階 40.0x28.0 - 16.0x10.0 (吸排付) = 960㎡  
2080㎡